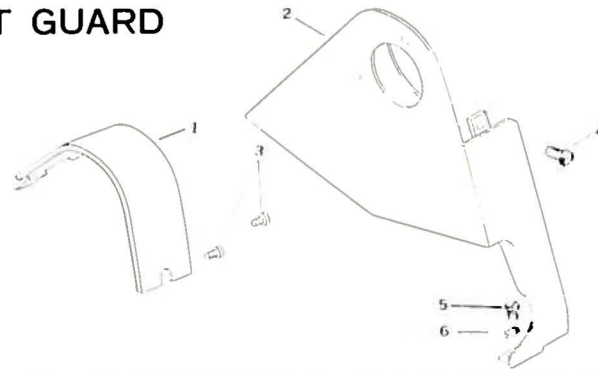


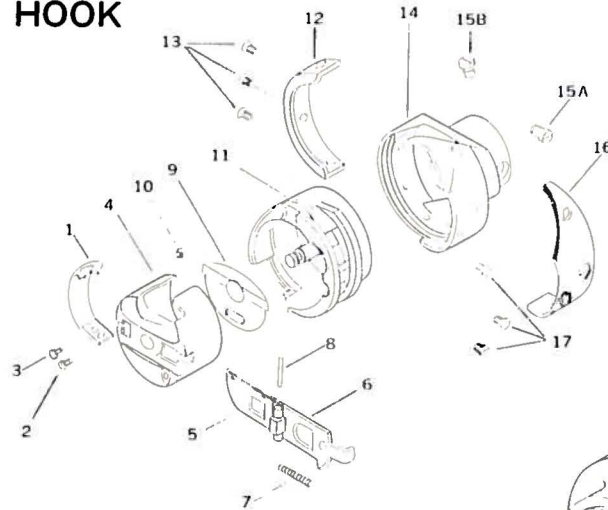
## BELT GUARD

| Fig. No. | Parts No. | Quantity | Name of Parts                 |
|----------|-----------|----------|-------------------------------|
| 1        | 15099     | 1        | Belt guard upper cover        |
| 2        | 15098     | 1        | Belt guard                    |
| 3        | 10650     | 2        | Set screw for # 15098 (upper) |
| 4        | 12481     | 1        | Set screw for # 15099         |
| 5        | 10650     | 1        | Set screw for # 15098 (lower) |
| 6        | 11142     | 1        | Washer for # 10650            |

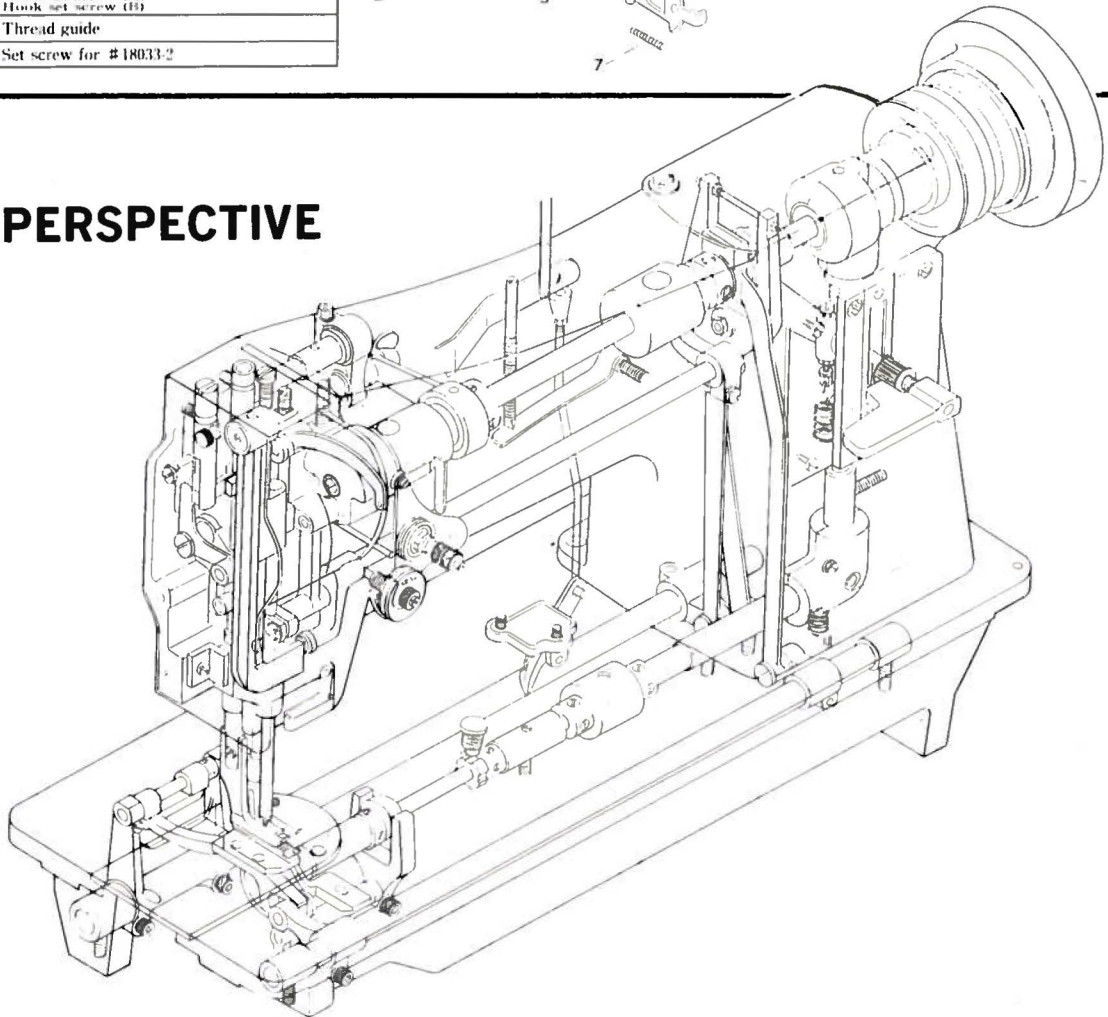


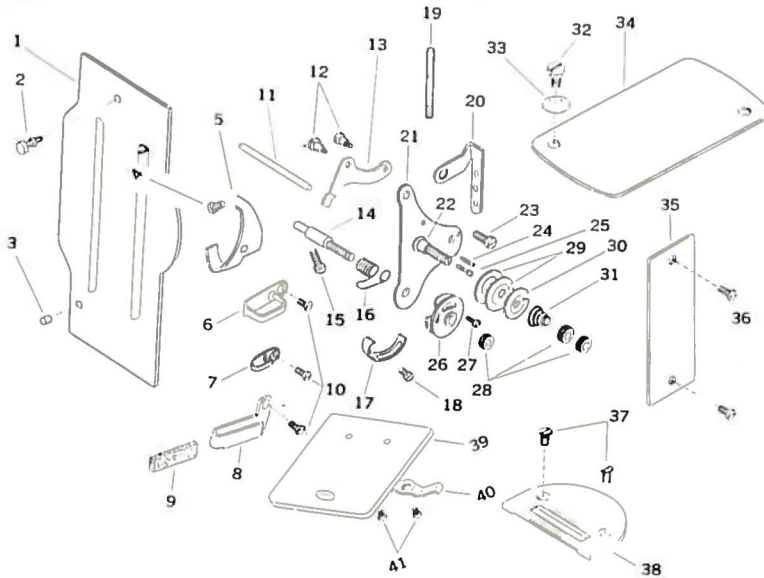
## HOOK

| Fig No. | Parts No. | Quantity | Name of Parts                          |
|---------|-----------|----------|--|
| 1       | 18045-2   | 1        | Thread tension spring                  |
| 2       | 18045-4   | 1        | Set screw for # 18045-2                |
| 3       | 18045-3   | 1        | Thread tension spring regulating screw |
| 4       | 18045-1   | 1        | Bobbin case                            |
| 5       | 18045-5   | 1        | Bobbin case pulling plate              |
| 6       | 18045-6   | 1        | Bobbin set plate                       |
| 7       | 18045-8   | 1        | Bobbin set plate spring                |
| 8       | 18045-7   | 1        | Pin for # 18045-6                      |
| 9       | 18045-10  | 1        | Thread releasing protecting spring     |
| 10      | 18045-9   | 1        | Set screw for # 18045-5                |
| 11      | 18033-4   | 1        | Bobbin case base                       |
| 12      | 18033-5   | 1        | Hook gib                               |
| 13      | 18033-6   | 3        | Set screw for # 18033-5                |
| 14      | 18033-1   | 1        | Rotating hook only                     |
| 15A     | 18033-7   | 1        | Hook set screw (A)                     |
| 15B     | 18033-8   | 1        | Hook set screw (B)                     |
| 16      | 18033-2   | 1        | Thread guide                           |
| 17      | 18033-3   | 3        | Set screw for # 18033-2                |



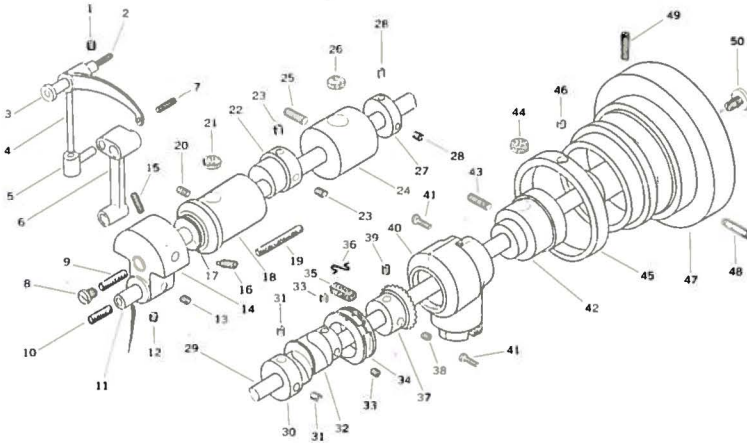
## PERSPECTIVE





**THREAD TENSION, GUIDE, NEEDLE PLATE**

**ARM SHAFT, TAKE UP LEVER**



| Fig No. | Parts No. | Quantity | Name of Parts                        |
|---------|-----------|----------|--------------------------------------|
| 1       | 10698     | 1        | Face plate                           |
| 2       | 10699     | 1        | Face plate set screw                 |
| 3       | 10700     | 1        | Face plate stopper pin               |
| 4       | 10650     | 1        | Screw for #10311                     |
| 5       | 10551     | 1        | Needle bar connecting link oil guard |
| 6       | 10682     | 1        | Thread guide (upper)                 |
| 7       | 10681     | 1        | Thread guide (middle)                |
| 8       | 10799     | 1        | Thread guide (lower)                 |
| 9       | 10760     | 1        | Felt for thread guide                |
| 10      | 10685     | 3        | Thread guide screw                   |
| 11      | 10720     | 1        | Tension release lever rod            |
| 12      | 10679     | 2        | Tension release lever screw          |
| 13      | 10678     | 1        | Tension release lever                |
| 14      | 10792     | 1        | Thread controller stud               |
| 15      | 10545     | 1        | Tension stud set screw               |
| 16      | 10689     | 1        | Thread controller spring             |
| 17      | 10690     | 1        | Thread controller spring stop        |
| 18      | 10650     | 1        | Set screw for #10690                 |
| 19      | 10709     | 1        | Spool pin                            |
| 20      | 15062     | 1        | Thread retainer                      |
| 21      | 10675     | 1        | Tension bracket                      |
| 22      | 10789     | 1        | Tension stud                         |
| 23      | 15055     | 1        | Set screw for #10675                 |
| 24      | 10791     | 1        | Tension bracket pin                  |
| 25      | 10793     | 1        | Tension release plunger              |
| 26      | 10694     | 1        | Thread controller disc               |
| 27      | 10695     | 1        | Thread controller disc screw         |
| 28      | 10697     | 3        | Tension thumb nut                    |
| 29      | 10691     | 2        | Thread disc                          |
| 30      | 10692     | 1        | Tension release washer               |
| 31      | 10693     | 1        | Tension release spring               |
| 32      | 10704     | 1        | Arm cap screw                        |
| 33      | 10703     | 1        | Arm cap screw washer                 |
| 34      | 18004     | 1        | Arm cap                              |
| 35      | 18005     | 1        | Arm side cover                       |
| 36      | 8100      | 2        | Set screw for #18005                 |
| 37      | 6031      | 2        | Needle plate set screw               |
| 38      | 18030     | 1        | Needle plate                         |
| 39      | 18032     | 1        | Bed slide                            |
| 40      | 6034      | 1        | Bed slide spring                     |
| 41      | 6035      | 2        | Set screw for #6034                  |

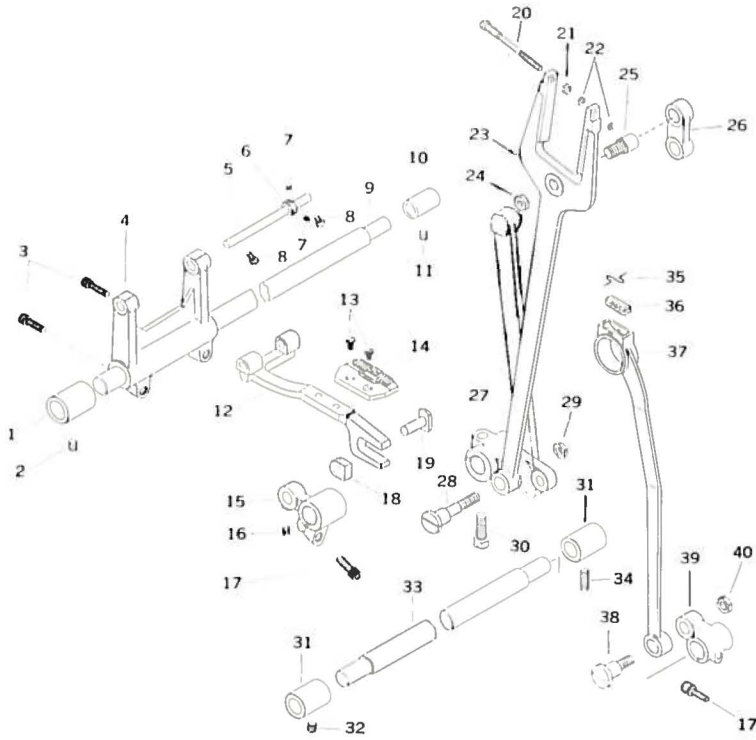
| Fig. No. | Parts No. | Quantity | Name of Parts                    |
|----------|-----------|----------|----------------------------------|
| 1        | 10571     | 1        | Set screw for #10527             |
| 2        | 10726     | 1        | Oil wick for #10527              |
| 3        | 10527     | 1        | Take up lever hinged stud        |
| 4        | 18003     | 1        | Thread take up lever             |
| 5        | 15026     | 1        | Take up lever driving stud       |
| 6        | 10528     | 1        | Needle bar connecting link       |
| 7        | 10728     | 1        | Oil wick for #15026              |
| 8        | 10506     | 1        | Arm shaft oil packing stop screw |
| 9        | 10724     | 1        | Oiling wick for arm shaft        |
| 10       | 10726     | 1        | Oiling wick for #10523           |
| 11       | 10523     | 1        | Needle bar connecting link stud  |
| 12       | 10764     | 1        | Set screw (B) for #10523         |
| 13       | 10524     | 1        | Set screw (A) for #10523         |
| 14       | 10520     | 1        | Needle bar crank                 |
| 15       | 10522     | 1        | Screw (B) for #10520             |
| 16       | 10521     | 1        | Screw (A) for #10520             |
| 17       | 10563     | 1        | Arm shaft bushing (front) washer |
| 18       | 18006     | 1        | Arm shaft bushing (front)        |
| 19       | 10729     | 1        | Oil wick for #18006              |
| 20       | 10522     | 1        | Set screw for #18006             |
| 21       | 10725     | 2        | Oiling felt for #18006           |
| 22       | 10771     | 1        | Lifting eccentric                |
| 23       | 10566     | 2        | Screw for #10771                 |
| 24       | 18008     | 1        | Arm shaft bushing (middle)       |
| 25       | 10571     | 1        | Set screw for #18008             |

| Fig. No. | Parts No. | Quantity | Name of Parts                 |
|----------|-----------|----------|-------------------------------|
| 26       | 10725     | 1        | Oiling felt for #18008        |
| 27       | 17014     | 1        | Arm shaft bushing collar      |
| 28       | 10766     | 2        | Set screw for #17014          |
| 29       | 17011     | 1        | Arm shaft                     |
| 30       | 18020     | 1        | Feed lifting cam              |
| 31       | 10766     | 2        | Set screw for #18020          |
| 32       | 18009     | 1        | Feed driving eccentric        |
| 33       | 10766     | 2        | Set screw for #18009          |
| 34       | 17040     | 1        | Feed fork collar              |
| 35       | 17041     | 1        | Oiling felt for #17040        |
| 36       | 10723     | 1        | Oiling felt presser pin       |
| 37       | 17017     | 1        | Arm shaft gear (spiral)       |
| 38       | 17018     | 1        | Set screw (A) for #17017      |
| 39       | 17019     | 1        | Set screw (B) for #17017      |
| 40       | 17015     | 1        | Gear cover (upper)            |
| 41       | 17016     | 2        | Set screw for #17015          |
| 42       | 17013     | 1        | Arm shaft bushing (rear)      |
| 43       | 10571     | 1        | Set screw for #17013          |
| 44       | 13081     | 1        | Oiling felt for #17013        |
| 45       | 13423-B   | 1        | Stitch length indicator       |
| 46       | 10566     | 1        | Set screw for #13423-B        |
| 47       | 10504     | 1        | Balance wheel                 |
| 48       | 10576     | 1        | Set screw (A) for #10504      |
| 49       | 10579     | 1        | Set screw (B) for #10504      |
| 50       | 10577     | 1        | Balance wheel adjusting screw |

From the library of: Diamond Needle Corp



## LOWER FEEDING MECHANISM

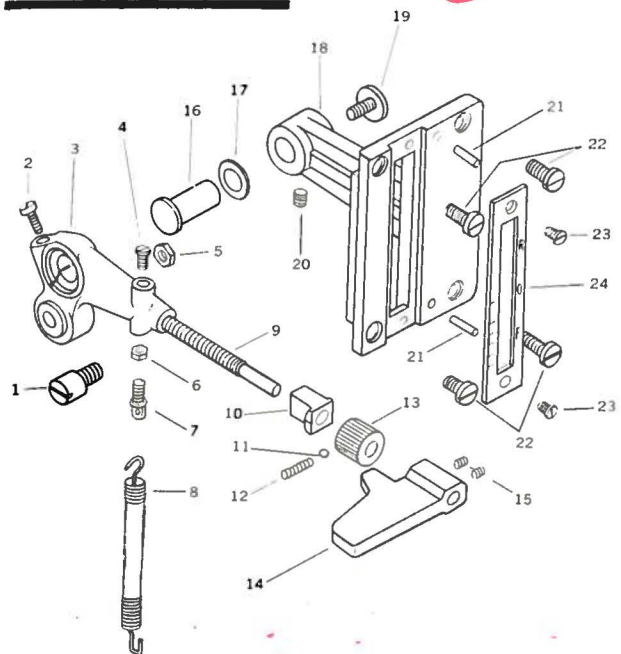


| Fig. No. | Parts No. | Quantity | Name of Parts                   |
|----------|-----------|----------|---------------------------------|
| 1        | 18062     | 1        | Feed rock shaft bushing (front) |
| 2        | 8009      | 1        | Set screw for #18062            |
| 3        | 18065     | 2        | Set screw for #18065            |
| 4        | 18061     | 1        | Feed rock shaft base            |
| 5        | 18067     | 1        | Feed base supporting pin        |
| 6        | 18068     | 1        | Feed base supporting pin collar |
| 7        | 8103      | 2        | Set screw for #18068            |
| 8        | 21104     | 2        | Set screw for #18067            |
| 9        | 18061     | 1        | Feed rock shaft                 |
| 10       | 18063     | 1        | Feed rock shaft bushing (rear)  |

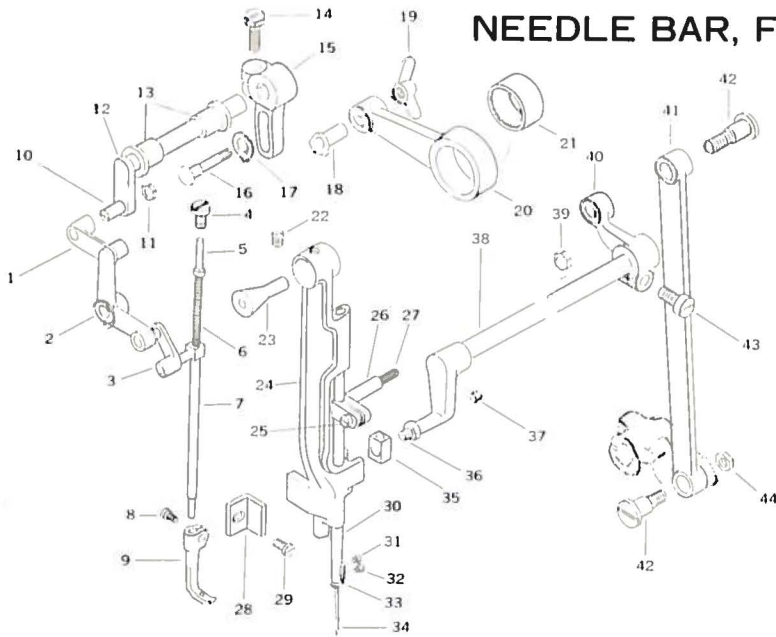
| Fig. No. | Parts No. | Quantity | Name of Parts                                    |
|----------|-----------|----------|--|
| 11       | 21124     | 1        | Set screw for #18063                             |
| 12       | 18066     | 1        | Feed base  |
| 13       | 8044      | 2        | Feed dog screw                                   |
| 14       | 18031     | 1        | Feed dog (Standard type)                         |
| 15       | 18074     | 1        | Feed lifting rock shaft front bell crank         |
| 16       | 2067      | 1        | Set screw for #18075                             |
| 17       | 18065     | 2        | Set screw for feed lifting rock shaft bell crank |
| 18       | 18075     | 1        | Feed lifting rock shaft slide block              |
| 19       | 18076     | 1        | Pin for #18075                                   |
| 20       | 18011     | 1        | Set screw for #18010                             |
| 21       | 4137      | 1        | Nut (big) for #18010                             |
| 22       | 4211      | 2        | Nut (small) for #18010                           |
| 23       | 18010     | 1        | Feed forked connection                           |
| 24       | 8105      | 1        | Nut for #18010                                   |
| 25       | 18014     | 1        | Hinge screw for #18010                           |
| 26       | 17207     | 1        | Feed connecting link                             |
| 27       | 18070     | 1        | Feed rock shaft bell crank (Back)                |
| 28       | 18015     | 1        | Hinge screw for #18010                           |
| 29       | 8105      | 1        | Nut for #18010                                   |
| 30       | 10754     | 1        | Pinch screw for #18070                           |
| 31       | 18073     | 2        | Feed lifting rock shaft bushing                  |
| 32       | 8009      | 1        | Set screw (front) for #18073                     |
| 33       | 18072     | 1        | Feed lifting rock shaft                          |
| 34       | 10579     | 1        | Set screw (rear) for #18073                      |
| 35       | 10723     | 1        | Oiling felt presser pin                          |
| 36       | 17041     | 1        | Oiling felt for #18021                           |
| 37       | 18021     | 1        | Crank connecting rod                             |
| 38       | 18018     | 1        | Hinge screw for #18021                           |
| 39       | 18077     | 1        | Feed lifting rock shaft bell crank (back)        |
| 40       | 8105      | 1        | Nut for #18018                                   |

## FEED REGULATOR

| Fig. No. | Parts No. | Quantity | Name of Parts                  |
|----------|-----------|----------|--------------------------------|
| 1        | 17209     | 1        | Feed regulating screw          |
| 2        | 17033     | 1        | Set screw for #18022           |
| 3        | 18022     | 1        | Feed regulator                 |
| 4        | 4019      | 1        | Set screw for #18025           |
| 5        | 8105      | 1        | Nut for #18025                 |
| 6        | 4135      | 1        | Nut for #18026                 |
| 7        | 17059     | 1        | Screw for #18026               |
| 8        | 18026     | 1        | Feed regulating lever spring   |
| 9        | 18025     | 1        | Feed regulating lever          |
| 10       | 13417     | 1        | Feed adjusting pipe            |
| 11       | 8158      | 1        | Bearing ball 1/8"              |
| 12       | 8157      | 1        | Spring for #8158               |
| 13       | 13416     | 1        | Feed adjusting knurling tool   |
| 14       | 18027     | 1        | Reverse stitch lever           |
| 15       | 18028     | 2        | Screw (small) for #18027       |
| 16       | 17055     | 1        | Feed regulating support stud   |
| 17       | 17057     | 1        | Washer for #17055              |
| 18       | 18023     | 1        | Feed regulating base           |
| 19       | 1368      | 1        | Supporting stud pushing screw  |
| 20       | 17056     | 1        | Screw for #18023               |
| 21       | 50174     | 2        | Pin for #18023                 |
| 22       | 12361     | 4        | Screw for #18023               |
| 23       | 17093     | 2        | Set screw for #18024           |
| 24       | 18024     | 1        | Stitch length indicating plate |



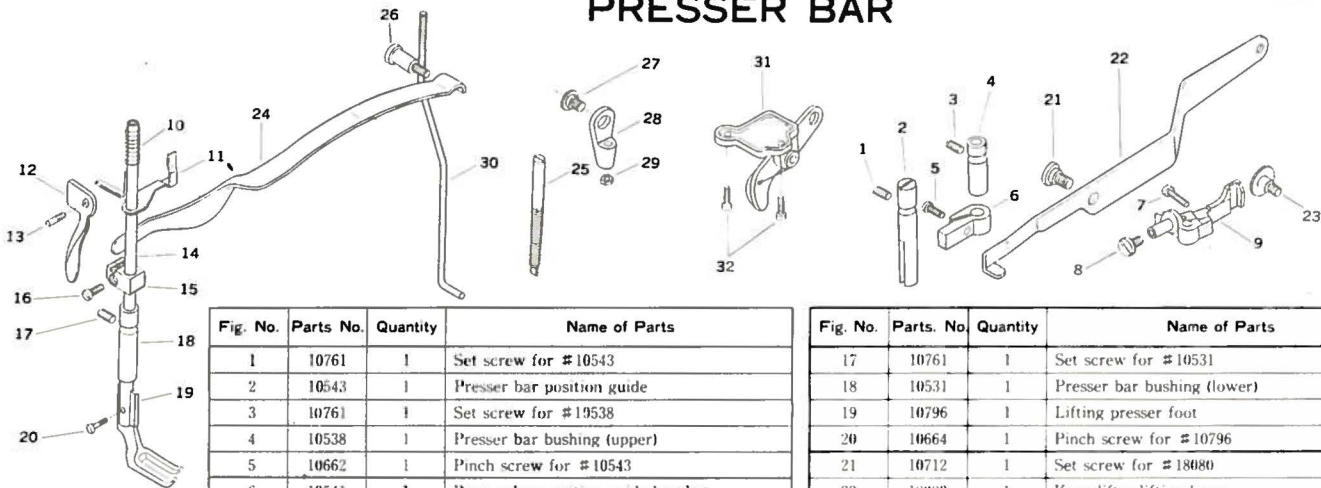
## NEEDLE BAR, FEEDING MECHANISM



| Fig. No. | Parts No. | Quantity | Name of Parts                          |
|----------|-----------|----------|--|
| 1        | 10557     | 1        | Lifting bell crank link                |
| 2        | 10558     | 1        | Lifting bell crank                     |
| 3        | 10556     | 1        | Vibrating presser bar connecting link  |
| 4        | 15060     | 1        | Screw for #10555                       |
| 5        | 10553     | 1        | Vibrating presser bar extension        |
| 6        | 10554     | 1        | Vibrating presser bar extension spring |
| 7        | 10555     | 1        | Vibrating presser bar                  |
| 8        | 10662     | 1        | Vibrating presser foot pinch screw     |
| 9        | 10795     | 1        | Vibrating presser foot                 |
| 10       | 10519     | 1        | Screw for #10515                       |

| Fig. No. | Parts No. | Quantity | Name of Parts                                     |
|----------|-----------|----------|---|
| 11       | 10517     | 1        | Nut for #10519                                    |
| 12       | 10515     | 1        | Lifting rock shaft                                |
| 13       | 10514     | 2        | Lifting rock shaft bushing                        |
| 14       | 10754     | 1        | Clamp screw for #10751                            |
| 15       | 10751     | 1        | Lifting eccentric connecting crank                |
| 16       | 10775     | 1        | Screw for #10774                                  |
| 17       | 10703     | 1        | Washer for #10774                                 |
| 18       | 10774     | 1        | Lifting eccentric connecting collar               |
| 19       | 10776     | 1        | Wing nut for #10772                               |
| 20       | 10772     | 1        | Lifting eccentric connection                      |
| 21       | 10773     | 1        | Needle bearing for #10772                         |
| 22       | 10525     | 1        | Screw for #10536                                  |
| 23       | 20103     | 1        | Needle bar rock frame hinged stud                 |
| 24       | 10536     | 1        | Needle bar rock frame                             |
| 25       | 10532     | 1        | Set screw for #10531                              |
| 26       | 10531     | 1        | Needle bar connecting stud                        |
| 27       | 10726     | 1        | Oil wick for #10531                               |
| 28       | 10560     | 1        | Needle bar rock frame position bracket            |
| 29       | 10561     | 1        | Set screw for #10560                              |
| 30       | 10530     | 1        | Needle bar  |
| 31       | 10534     | 1        | Set screw for #10533                              |
| 32       | 10535     | 1        | Needle set screw                                  |
| 33       | 10533     | 1        | Needle bar thread guide                           |
| 34       | 6332      | 1        | Needle DPx17 #22                                  |
| 35       | 10582     | 1        | Needle bar rock frame side block                  |
| 36       | 10580     | 1        | Needle bar rock frame side block stud             |
| 37       | 10581     | 1        | Screw for #17048                                  |
| 38       | 17048     | 1        | Needle bar rock frame rock shaft                  |
| 39       | 6026      | 1        | Nut (upper) for #18017                            |
| 40       | 18016     | 1        | Needle bar rock frame rock shaft crank            |
| 41       | 18017     | 1        | Needle bar rock frame rock shaft crank connection |
| 42       | 18018     | 2        | Hinge screw for #18017                            |
| 43       | 10519     | 1        | Set screw for #18016                              |
| 44       | 8105      | 1        | Nut for #18018                                    |

## PRESSER BAR

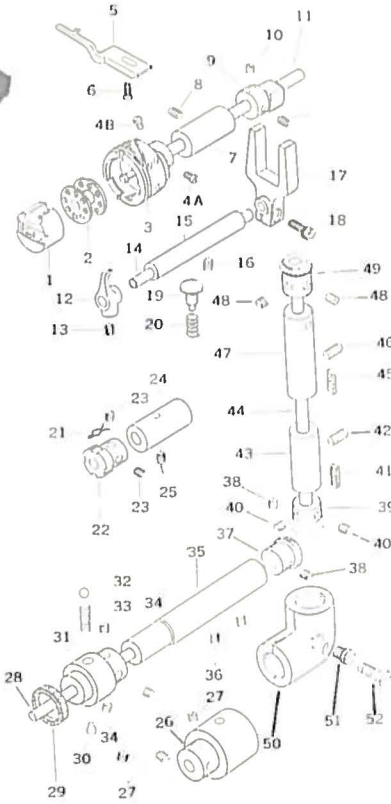


| Fig. No. | Parts No. | Quantity | Name of Parts                      |
|----------|-----------|----------|------------------------------------|
| 1        | 10761     | 1        | Set screw for #10543               |
| 2        | 10543     | 1        | Presser bar position guide         |
| 3        | 10761     | 1        | Set screw for #19538               |
| 4        | 10538     | 1        | Presser bar bushing (upper)        |
| 5        | 10662     | 1        | Pinch screw for #10543             |
| 6        | 10541     | 1        | Presser bar position guide bracket |
| 7        | 10545     | 1        | Screw for #10544                   |
| 8        | 10559     | 1        | Set screw for #10558               |
| 9        | 10544     | 1        | Presser bar lifting bracket        |
| 10       | 10547     | 1        | Tension release spring             |
| 11       | 10546     | 1        | Tension release slide              |
| 12       | 10659     | 1        | Presser bar lifter                 |
| 13       | 10660     | 1        | Hinge screw for #10659             |
| 14       | 10540     | 1        | Presser bar                        |
| 15       | 10549     | 1        | Presser bar spring bracket         |
| 16       | 10532     | 1        | Pinch screw for #10549             |

| Fig. No. | Parts No. | Quantity | Name of Parts                                  |
|----------|-----------|----------|--|
| 17       | 10761     | 1        | Set screw for #10531                           |
| 18       | 10531     | 1        | Presser bar bushing (lower)                    |
| 19       | 10796     | 1        | Lifting presser foot                           |
| 20       | 10664     | 1        | Pinch screw for #10796                         |
| 21       | 10712     | 1        | Set screw for #18080                           |
| 22       | 18080     | 1        | Knee lifter lifting lever                      |
| 23       | 10548     | 1        | Presser bar lifting bracket guide screw        |
| 24       | 10705     | 1        | Presser bar spring (flat)                      |
| 25       | 11156     | 1        | Presser bar spring (flat) regulating screw     |
| 26       | 10706     | 1        | Presser bar spring (flat) supporting screw     |
| 27       | 6384      | 1        | Hinge screw for #6359                          |
| 28       | 6359      | 1        | Knee lifter lifting lever connecting rod joint |
| 29       | 6360      | 1        | Knee lifter lifting lever connecting rod screw |
| 30       | 18081     | 1        | Knee lifter lifting lever connecting rod       |
| 31       | 18082     | 1        | Knee lifter bell crank complete                |
| 32       | 18085     | 2        | Set screw for Knee lifter bell crank complete  |



## ARM SHAFT (UPRIGHT), LOWER SHAFT



| Fig. No. | Parts No. | Quantity | Name of Parts                  | Fig. No. | Parts No. | Quantity | Name of Parts                       |
|----------|-----------|----------|--------------------------------|----------|-----------|----------|-------------------------------------|
| 1        | 18045     | 1        | Bobbin case complete           | 27       | 17019     | 3        | Set screw for #18047                |
| 2        | 18034     | 1        | Bobbin                         | 28       | 18056     | 1        | Lower shaft                         |
| 3        | 18033     | 1        | Rotating hook complete         | 29       | 18046     | 1        | Oil wick for #18047                 |
| 4A       | 18033.7   | 1        | Hook set screw (A)             | 30       | 18051     | 1        | Set screw for #18050                |
| 4B       | 18033.8   | 1        | Hook set screw (B)             | 31       | 18048     | 1        | Safety clutch (right)               |
| 5        | 18035     | 1        | Hook supporting plate          | 32       | 18049     | 1        | Steel ball                          |
| 6        | 6025      | 1        | Set screw for #18035           | 33       | 18050     | 1        | Spring for #18041                   |
| 7        | 18037     | 1        | Hook shaft bushing (front)     | 34       | 17019     | 3        | Set screw for #18041                |
| 8        | 8009      | 1        | Set screw for #18037           | 35       | 18057     | 1        | Lower shaft bushing                 |
| 9        | 18044     | 1        | Hook shaft collar              | 36       | 8009      | 2        | Set screw for #18057                |
| 10       | 50304     | 2        | Set screw for #18044           | 37       | 17028     | 1        | Lower shaft gear (spiral)           |
| 11       | 18036     | 1        | Hook driving shaft             | 38       | 17022     | 2        | Set screw for #17027                |
| 12       | 18039     | 1        | Thread release finger          | 39       | 17023     | 1        | Arm shaft (upright) gear (lower)    |
| 13       | 18040     | 1        | Set screw for #18039           | 40       | 17022     | 2        | Set screw for #17023                |
| 14       | 18041     | 1        | Thread releasing shaft         | 41       | 17026     | 1        | Oiling felt for #17025              |
| 15       | 18042     | 1        | Thread releasing shaft bushing | 42       | 10571     | 1        | Set screw for #17026                |
| 16       | 21124     | 1        | Set screw for #18042           | 43       | 17025     | 1        | Arm shaft (upright) bushing (lower) |
| 17       | 18043     | 1        | Thread releasing shaft fork    | 44       | 17020     | 1        | Arm shaft (upright)                 |
| 18       | 30066     | 1        | Pinch screw for #18043         | 45       | 17026     | 1        | Oiling felt for #17024              |
| 19       | 18053     | 1        | Push button                    | 46       | 10571     | 1        | Set screw for #17026                |
| 20       | 18054     | 1        | Push button spring             | 47       | 17024     | 1        | Arm shaft (upright) bushing (upper) |
| 21       | 10674     | 1        | Clip for #18033                | 48       | 17022     | 2        | Set screw for #17021                |
| 22       | 18052     | 1        | Hook shaft lock ratchet        | 49       | 17021     | 1        | Arm shaft (upright) gear (spiral)   |
| 23       | 17022     | 2        | Set screw for #18052           | 50       | 18058     | 1        | Gear cover complete (lower)         |
| 24       | 18038     | 1        | Hook shaft bushing (rear)      | 51       | 18060     | 1        | Gear cover (lower) sealing screw    |
| 25       | 8009      | 1        | Set screw for #18038           | 52       | 18059     | 1        | Pinch screw for #18058              |
| 26       | 18047     | 1        | Safety clutch (left)           |          |           |          |                                     |

## ACCESSORIES

| Fig. No. | Parts No. | Quantity | Name of Parts                         |
|----------|-----------|----------|---------------------------------------|
| 1        | 8142      | 1        | Accessories box                       |
| 2        | 6057      | 1        | Vinyl cover                           |
| 3        | 8123      | 1        | Oil                                   |
| 4        | 8125      | 1        | Oiler                                 |
| 5        | 10509     | 1        | Spool pin                             |
| 6        | 18034     | 6        | Bobbin                                |
| 7        | 6332      | 3        | Needle DPX17 #22                      |
| 8        | 18029     | 1        | Needle plate (for without lower feed) |
| 9        | 2046      | 1        | Needle plate spring                   |
| 10       | 2063      | 2        | Set screw for #2036                   |
| 11       | 15371     | 1        | Wrench 4.0mm                          |
| 12       | 11969     | 1        | Wrench 2.5mm                          |
| 13       | 10748     | 1        | Double head wrench                    |
| 14       | 18084     | 1        | Spanner 6 x 5mm                       |
| 15       | 8118      | 1        | Screw driver (large)                  |
| 16       | 8120      | 1        | Screw driver (middle)                 |
| 17       | 8121      | 1        | Screw driver (small)                  |
| 18       | 6052      | 2        | Screw for #6054                       |
| 19       | 6054      | 2        | Bed hinge connection                  |
| 20       | 6055      | 1        | Nail for #6054                        |
| 21       | 6054      | 1        | Oil pan                               |
| 22       | 10734     | 1        | Bobbin winder complete                |
| 23       | 10780     | 1        | Thread stand                          |
| 24       | 18038     | 1        | Knee lifter complete                  |

